



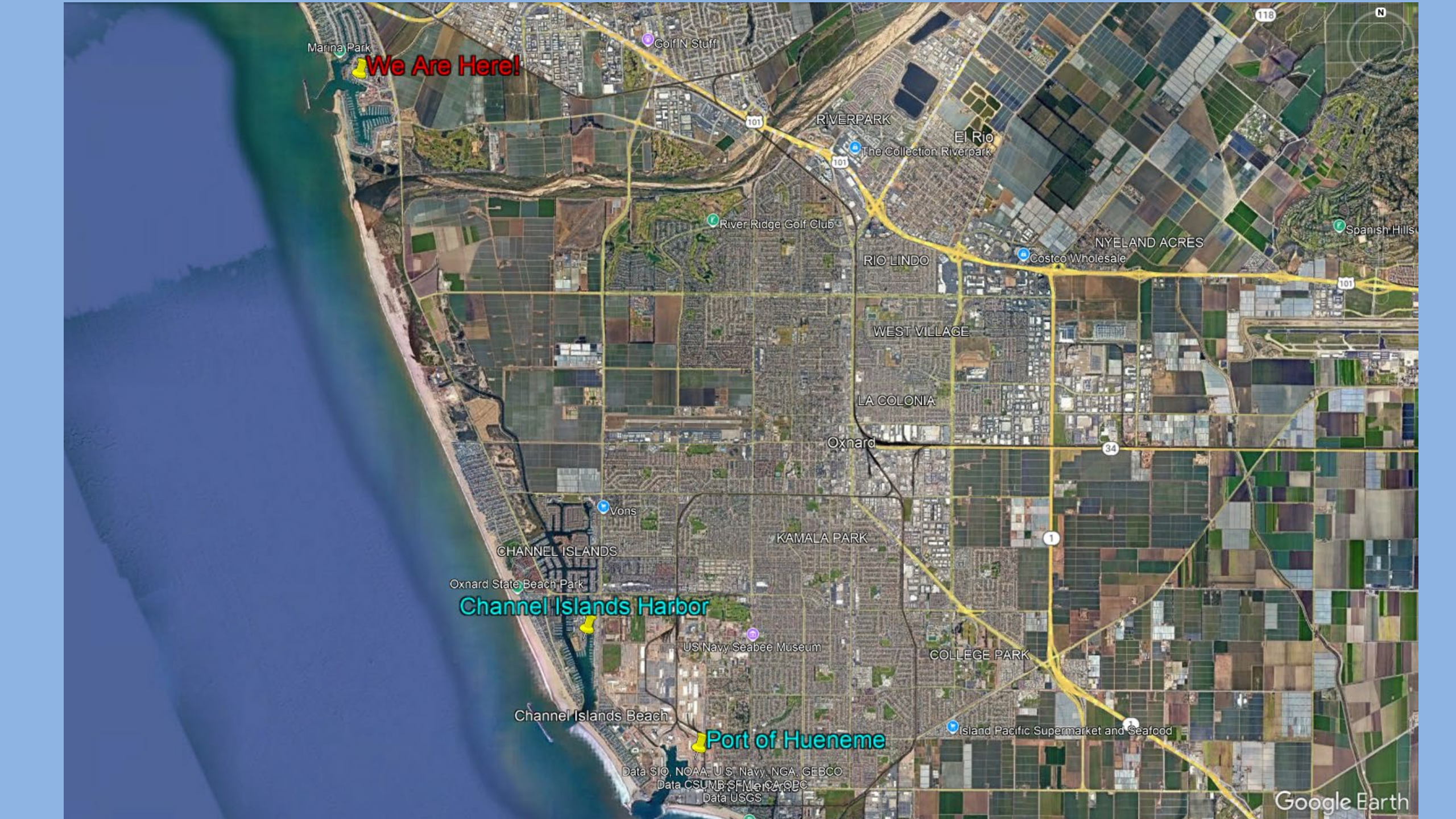
CMANC

# Welcome to Ventura County! May 16, 2025

Ventura Harbor Updates on Dredging & Beach  
Nourishment in 2025







Marina Park

We Are Here!

Golf N Stuff

101

RIVERPARK

The Collection Riverpark

El Rio

River Ridge Golf Club

RIO LINDO

Costco Wholesale

NYELAND ACRES

101

Spanish Hills

WEST VILLAGE

LA COLONIA

Oxnard

34

1

Vons

CHANNEL ISLANDS

KAMALA PARK

Oxnard State Beach Park

Channel Islands Harbor

US Navy Seabee Museum

COLLEGE PARK

Channel Islands Beach

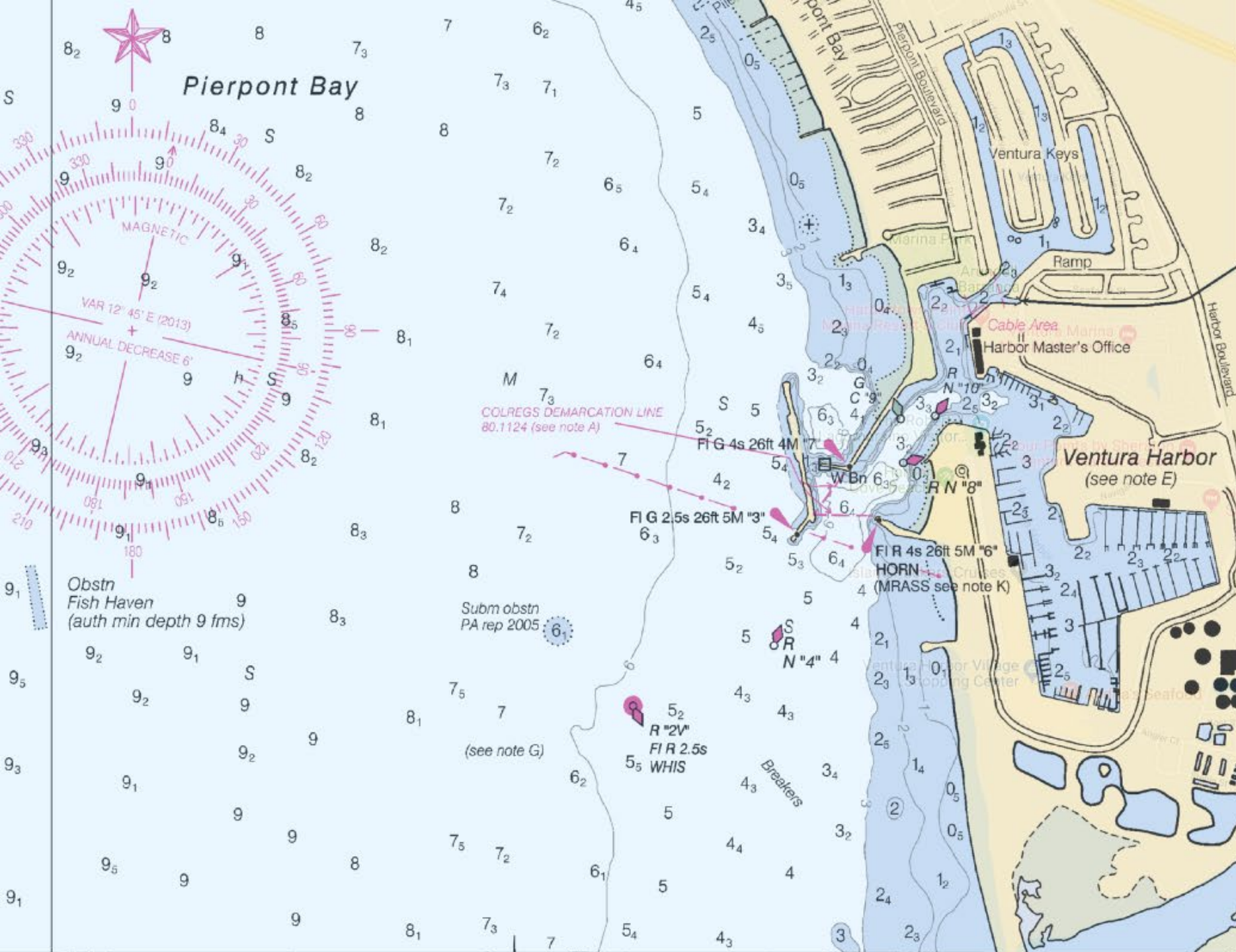
Port of Hueneme

Island Pacific Supermarket and Seafood

Data SIO, NOAA, U.S. Navy, NGA, GEBCO  
Data CSUMB, SFM, CA, QBC  
Data USGS

Google Earth





**Ventura Harbor's Entrance channel is designed to be maintained at -20' MLLW water depth.**

**The Port District maintains the inner harbor at approx. -17' to accommodate the commercial fishing fleet of ~57 Purse Seiner fishing vessels which draw up to -16' when loaded.**



# Ventura Harbor

Federal  
Sand Trap

Federal Channel  
Entrance

Arundell Barranca

Surfer's Knoll Beach





# Winter Storms Annually Erode the Beaches & Dunes



Beaches and  
Dune Habitat  
Lost

Restrooms,  
Showers &  
Parking Lot

Spinnaker Drive



# Winter Storms Annually Erode the Beaches & Dunes



Dune Erosion



# Dredging In Action



# Dredging In Action





## Less and Less Material in the Federal Channel



- Over the past 20 years, an average of 550,000 cubic yards of material has been dredged from the channel.
- However, recent dredge volumes have been lower likely due to the lack of sand on beaches in more northern parts of Ventura.
- 2024: 365,000 cubic yards
- 2025: 360,000 cubic yards



# Dredging of the Inner Harbor



- Inner harbor was last dredged in 2024 (94,000 cubic yards) and remains in good condition.
- Next inner harbor dredging not likely for 3-5 years (unless there is significant runoff in the Arundell Barranca).
- City of Ventura has no definitive plan for dredging the Ventura Keys.



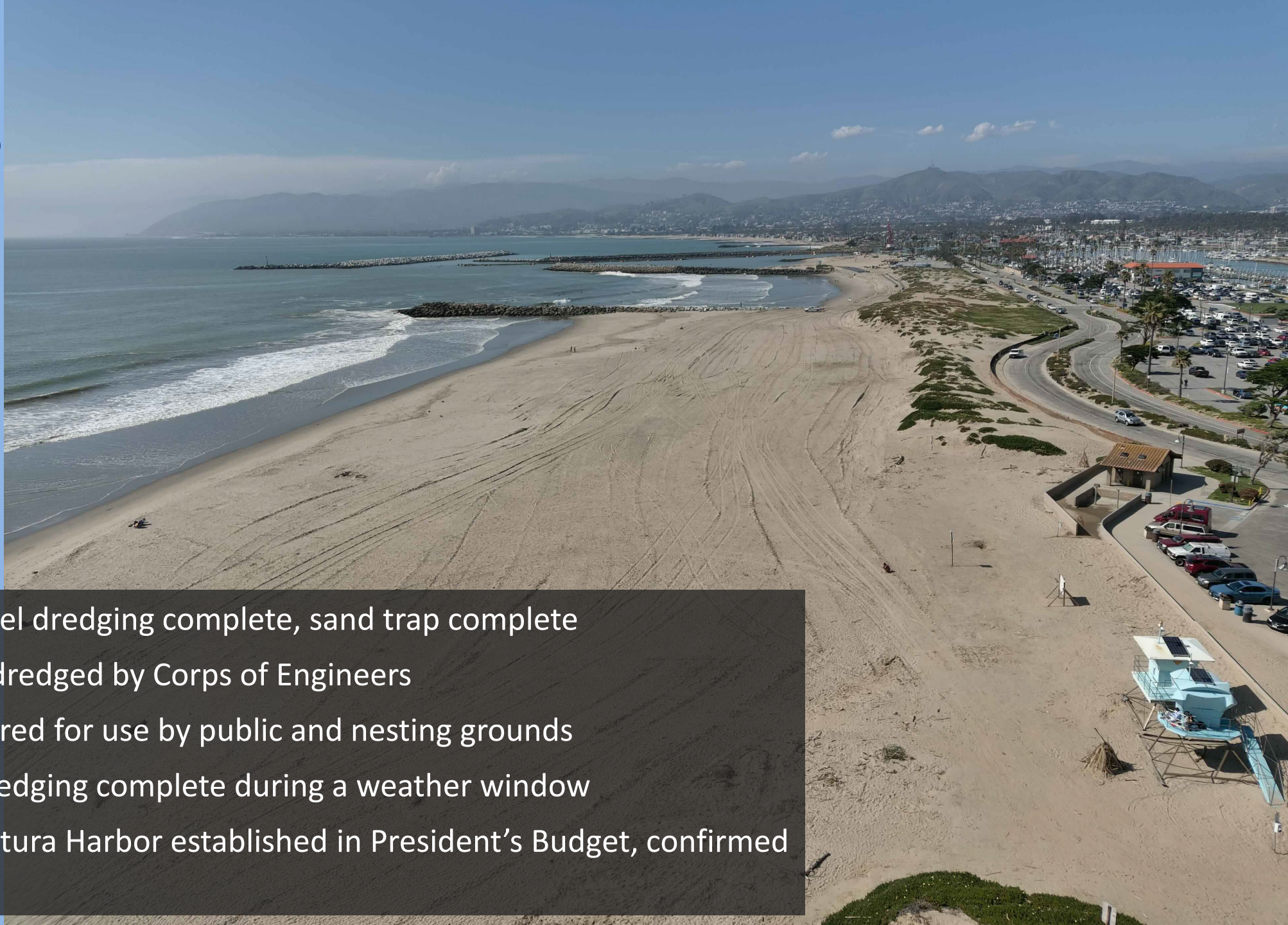
# Dredging Material Placement



- With a reduction in material available and the amount of erosion in recent years, it has been important to maximize placement.
- The dredging contractor has provided a retainment dike to slow the migration of sediment into the ocean and allow more sand to stay on the beach.



# Where are we Today?



- 2025 entrance channel dredging complete, sand trap complete
- 360,000 cubic yards dredged by Corps of Engineers
- Beaches largely restored for use by public and nesting grounds
- 2024 inner harbor dredging complete during a weather window
- FY25 Funding for Ventura Harbor established in President's Budget, confirmed in Work Plan



# Sand Management Has Been a Challenge



- The Port District has managed the beautiful beaches of Ventura Harbor for almost 40 years (City issued CDP).
- In 2023, the California Coastal Commission (CC) notified the Port District that it also needed a CDP from CC and sand management was stopped.
- The Port District has been diligently working to obtain such a permit since that time – but there is still a lack of concurrence with the CCC.



# Commercial Fishing

The Ventura Port District is typically the “largest” commercial fishing harbor in California each year.

In 2024, 40 million pounds of squid was landed.

Port of Hueneme is not far behind. But their ongoing increase in cargo movement means squid is conflicting with goods movement.

Commercial fishing is a principle justification for federal dredging of Ventura Harbor.

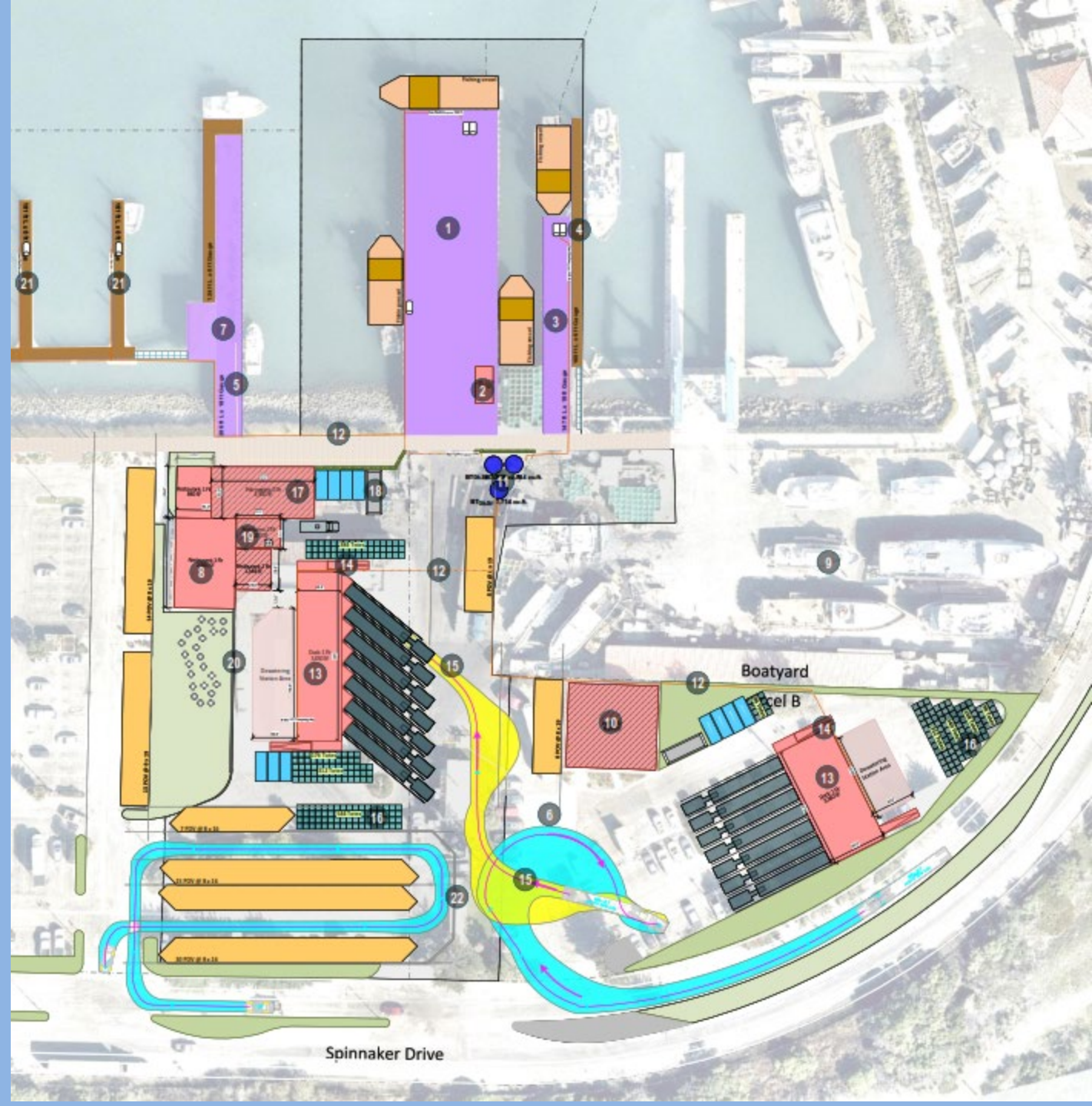




# Commercial Fishing

Ventura Port District worked with the Port of Hueneme to obtain a grant from CalSTA to relocate the Port of Hueneme's squid offloading to Ventura.

The grant pursuit was successful and the CEQA is currently in its public comment period.





# Parking Management (Paid Parking)

We are currently implementing paid parking throughout District operated areas of Ventura Harbor.

Program included some very positive public benefits including bilingual signage.

We also have several mitigations in the program.



VENTURA  
PORT DISTRICT  
*Established 1952*

## PAID PARKING

**Fridays • Saturdays • Sundays • Holidays**  
**10 AM to 8 PM**

<b>Per Hour (Up to 4 Hours):</b>	<b>\$1</b>
<b>Daily Pass:</b>	<b>\$10</b>

**PLEASE PAY BY LICENSE PLATE**

**ENFORCED BY LICENSE PLATE RECOGNITION TECHNOLOGY**

**VEHICLES MUST OCCUPY A SINGLE SPACE**  
**OVERSIZE VEHICLES BY PERMIT ONLY**

**Parking lot closed: 9 PM to 6 AM**  
**(Exception by permit only)**

## PARQUÍMETROS

**Viernes • Sábados • Domingos • Días Festivos**  
**10 AM a las 8 PM**

<b>Por Hora (hasta 4 horas):</b>	<b>\$1</b>
<b>Pase de un Día:</b>	<b>\$10</b>

**PAGUE USANDO SU PLACA DE VEHICULO**

**VIGILADO POR TECNOLOGÍA DE RECONOCIMIENTO DE PLACAS**

**LOS VEHÍCULOS DEBEN OCUPAR UN SOLO ESPACIO.**  
**VEHÍCULOS DE GRAN TAMAÑO SOLO CON PERMISO.**

**El Estacionamiento: 9 PM a las 6 AM**  
**(Excepción solo con permiso)**



# Parking Management (Paid Parking)

First time citations will be issued a warning – once per license plate with no end date.

Parking fines can be paid the same day at the kiosk: for just \$15 (\$5 more than the price of a day pass)

Vehicles can move between parking lots without paying again (encourage movement and turn-over).

Parking enforcement staff will be able to void tickets in the field...once the person goes and pays for their parking!

Goal is to show zero dollars in enforcement revenue and maximize compliance.

## PAID PARKING

Paid Parking in effect: 10 AM to 8 PM

**Fridays • Saturdays • Sundays • Holidays**

Parking lot closed: Sunset to Sunrise

## PAY BY LICENSE PLATE



**Per Hour** (Up to 4 Hours): **\$1**  
Por Hora (Hasta 4 Horas):

**Day Pass:** **\$10**  
Pase De Un Dia:

## PAGUE USANDO SU PLACA DE VEHICULO

## PARQUÍMETROS

Tarifas vigentes: 10 AM to 8 PM

**Viernes • Sabados • Domingos • Dias Festivos**

Estacionamiento cierra del atardecer al amanecer



Thank you for Coming to Ventura!

