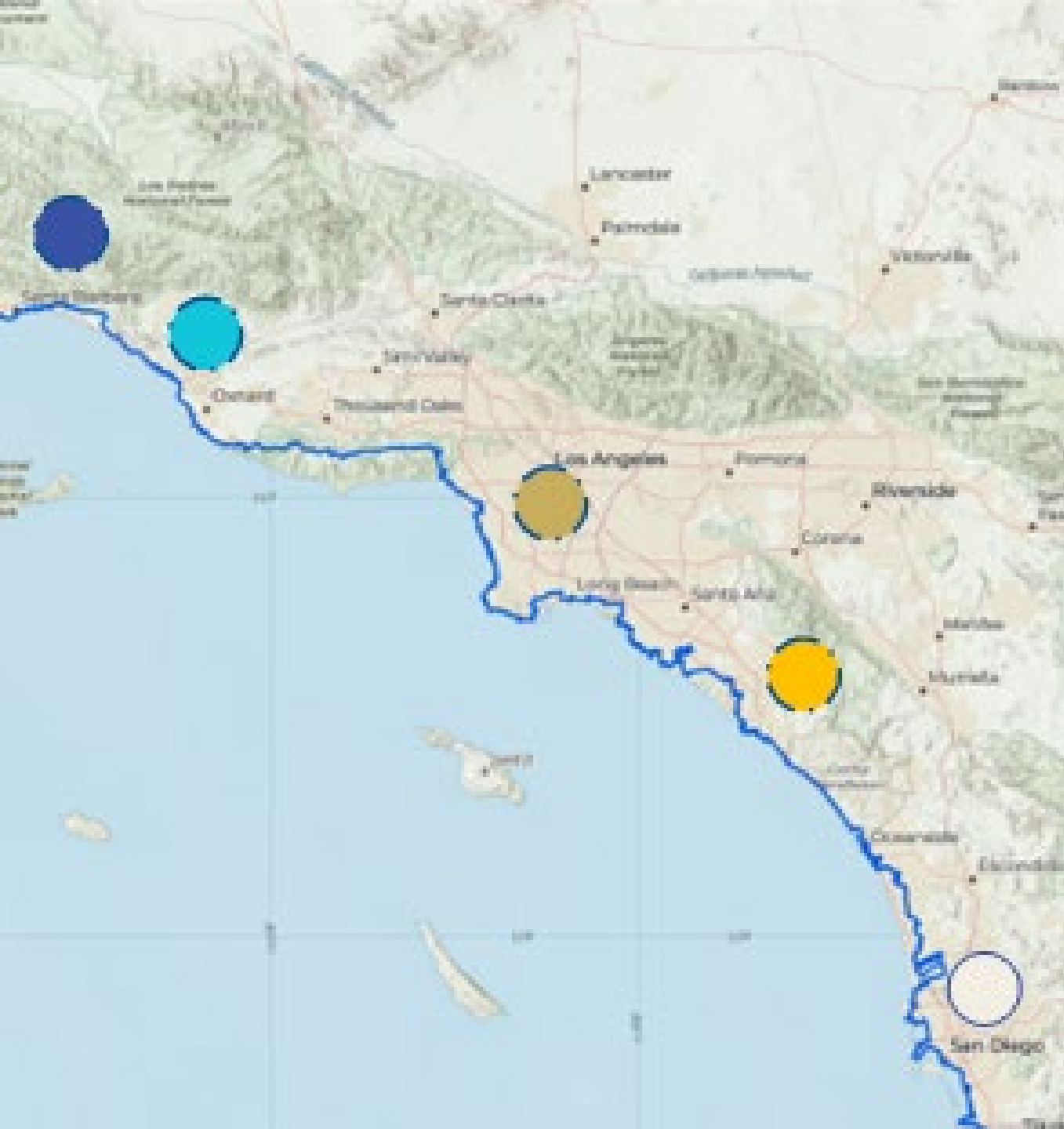


FINDING COMMON GROUND: PREPARING FOR DC ADVOCACY





SOUTHERN CALIFORNIA SAND COLLABORATIVE (SCSC)

-
- **AGENCIES**
 - Beach Erosion Authority for Clean Oceans and Nourishment (BEACON)
 - Santa Barbara
 - Ventura
 - Los Angeles
 - Orange
 - San Diego
 - Los Angeles County
 - Orange County
 - San Diego Association of Governments (SANDAG)
 - **COUNTIES**



**COULD ASBPA/CSBPA/SCSC & CMANC
ADVANCE SHARED GOALS THROUGH
D.C. ADVOCACY?**



ASBPA/CSO Selected Recommendations related to Regulatory Improvements

- Multi-year (more than 5 years) General / Programmatic Permits
- Single-application joint permitting process (Federal, State, local)
- Programmatic assessments (ESA, EFH, etc.)
- Programmatic environmental review (similar to programmatic EIR for habitat restoration projects)
- Refine and standardize grain size limits



Suggested Revisions to USACE Nationwide Permit (NWP) 54: Living Shorelines

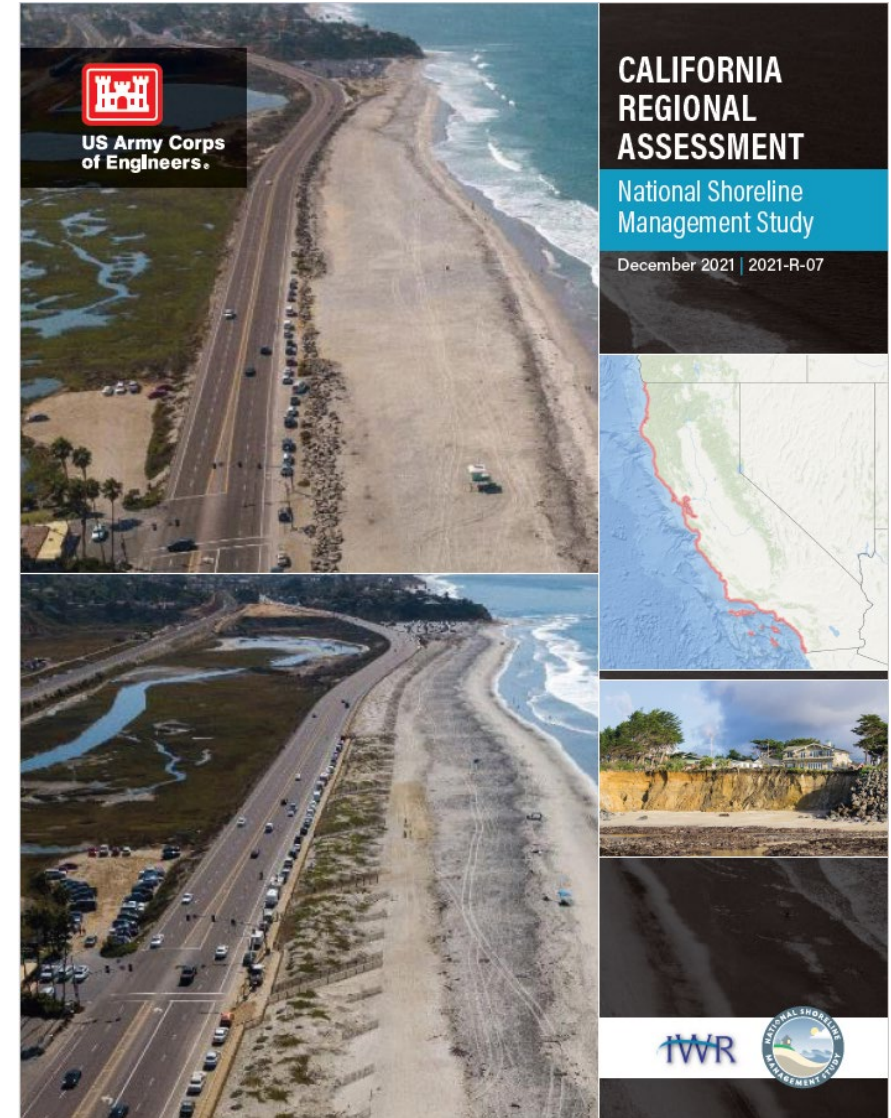
- Page 2 - 1.0 – allow for beach nourishment under NWP-54, i.e., delete the sentence which states that the NWP does not authorize beach nourishment.
- Page 1 - 1.0.(a) – delete the restriction that structures and fill area cannot extend into the waterbody more than 30 feet from the mean low water line. Even though this can be waived by the district engineer, it creates an additional step (barrier) and the district engineer is not always willing or does not have the time to do this.
- Page 1 - 1.0(b) – delete the restriction that the activity must be no more than 500 feet in length. Similar to the above, even though this can be waived by the district engineer, it creates an additional step (barrier) and the district engineer is not always willing or does not have the time to do this.

Regional and National Coordination: USACE Shoreline Management Study Recommendations

- Coordinate Shoreline Management
- Research to Support Effective Shoreline Management
- Protect Resources with Cultural, Archaeological, and Economic Value to California Communities
- Assess Effective Sand and Beach Nourishment Strategies

California Regional Assessment National Shoreline Management Study

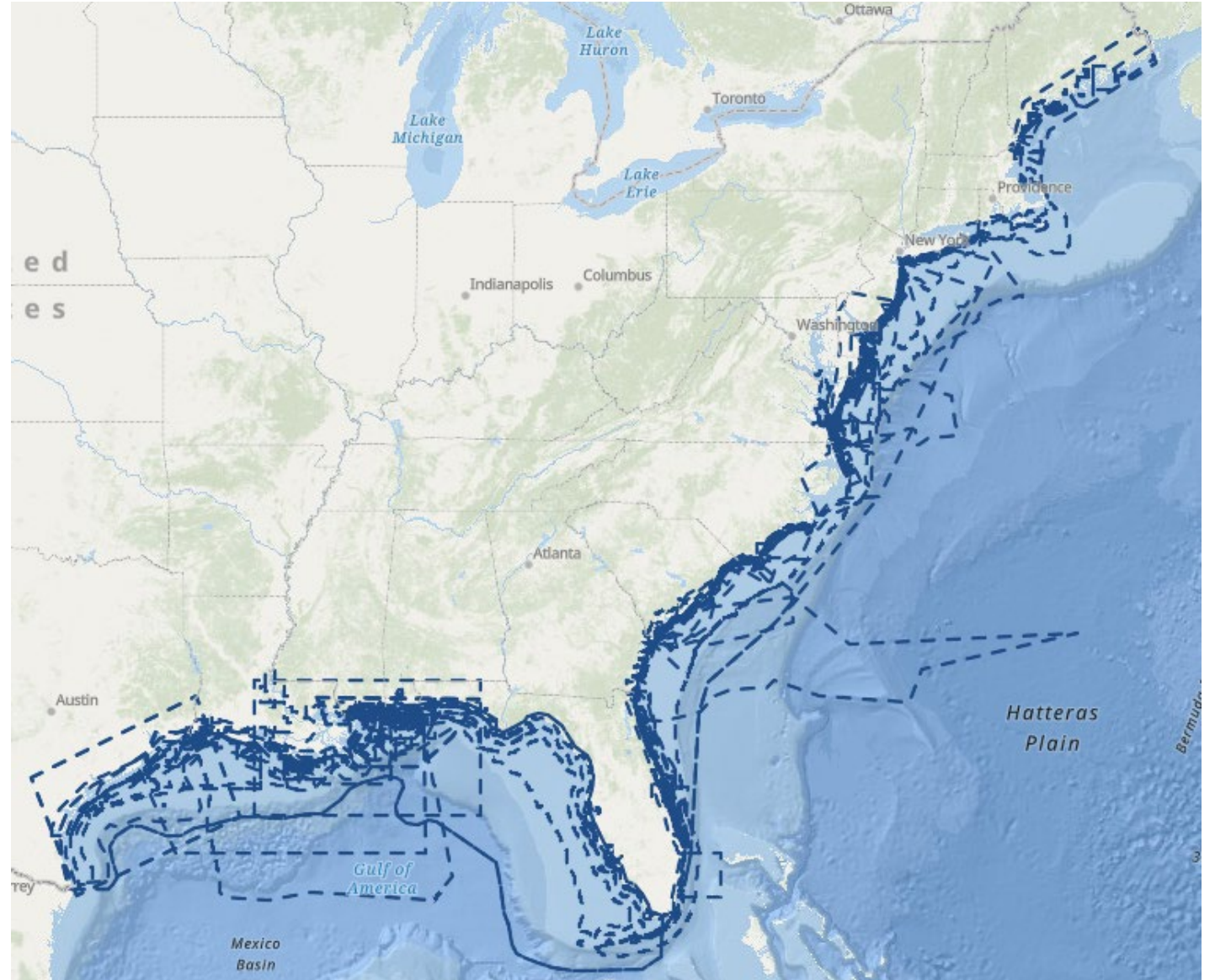
- Key steps for systematic coastal sediment management include:
 - Develop process-related guidance to help eliminate confusion with the regulatory process and streamline project permitting.
 - Develop Regional General Permits and region-based environmental impact statement/reports for beach restoration



Coastal Sediment Management Workgroup (CSMW)

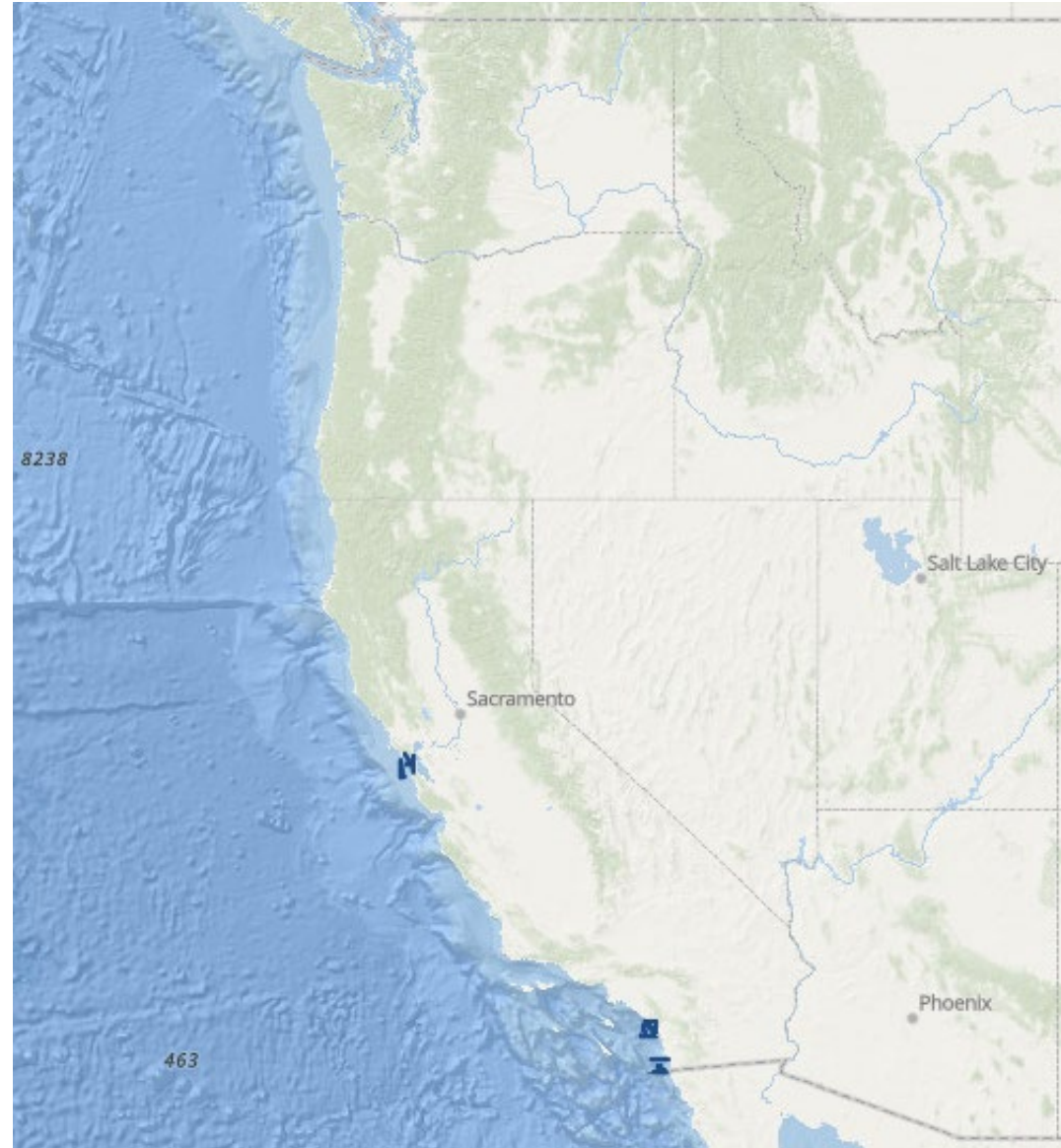
- Principles of Systematic Sediment Management
 - Establish a regional framework (i.e., littoral cell boundaries, sediment budgets, and regional regulatory jurisdiction.
 - Determine issues that may inhibit implementation of opportunities to restore sediment balance.
 - Educate concerned stakeholders on the value of sediment and need for regional sediment management solutions.
 - Promote cooperative and coordinated efforts by agencies involved in protecting coastal resources.

Where's the Sediment?



SOURCE: BOEM'S MARINE MINERALS INFORMATION SYSTEM

Where's the Sediment?



SOURCE: BOEM'S MARINE MINERALS INFORMATION SYSTEM

IDEAS FOR SHARED GOALS THAT ASBPA/CSBPA/SCSC & CMANC MIGHT ADVANCE THROUGH D.C. ADVOCACY?
