

# Manson Construction – Recent Equipment Investment

## *Drivers of Equipment Investment*

- Capacity Expansion
- Replacement
- Efficiency Improvement
- Compliance (AQ)



Building the Nation's Waterways and Marine Infrastructure Since 1905  
An Employee-Owned Company | [www.mansonconstruction.com](http://www.mansonconstruction.com)

## HR Morris Upgrade 2024

- Replaced Wound Rotor AC Motor and Liquid Rheostat with 6,000hp Permanent Magnet Motors & Variable Frequency AC drive





# HR Morris Upgrade 2024

- Replaced Main Pump with High Efficiency GIW WBC64 Pump

## Why Upgrade Morris?

- Difficulty Sourcing Parts for old system
- Lower Power Consumption = Fuel Savings



Building the Nation's Waterways and Marine Infrastructure Since 1905  
An Employee-Owned Company | [www.mansonconstruction.com](http://www.mansonconstruction.com)

# TSHD Frederick Paup Specifications

## *DREDGE FREDERICK PAUP*

- Jones Act Compliant Vessel
- Length: 420FT
- Width: 81FT
- Capacity: 15,000+ Cubic Yards
- Diesel Electric Power Plant
  - 3 – GE16V250 Main Engines
  - 2 – GE12V250 Main Engines
- Propulsion Power: 9,000 HP
- Total Installed power:
  - 24,601 Horsepower
  - Or...18MW of electricity



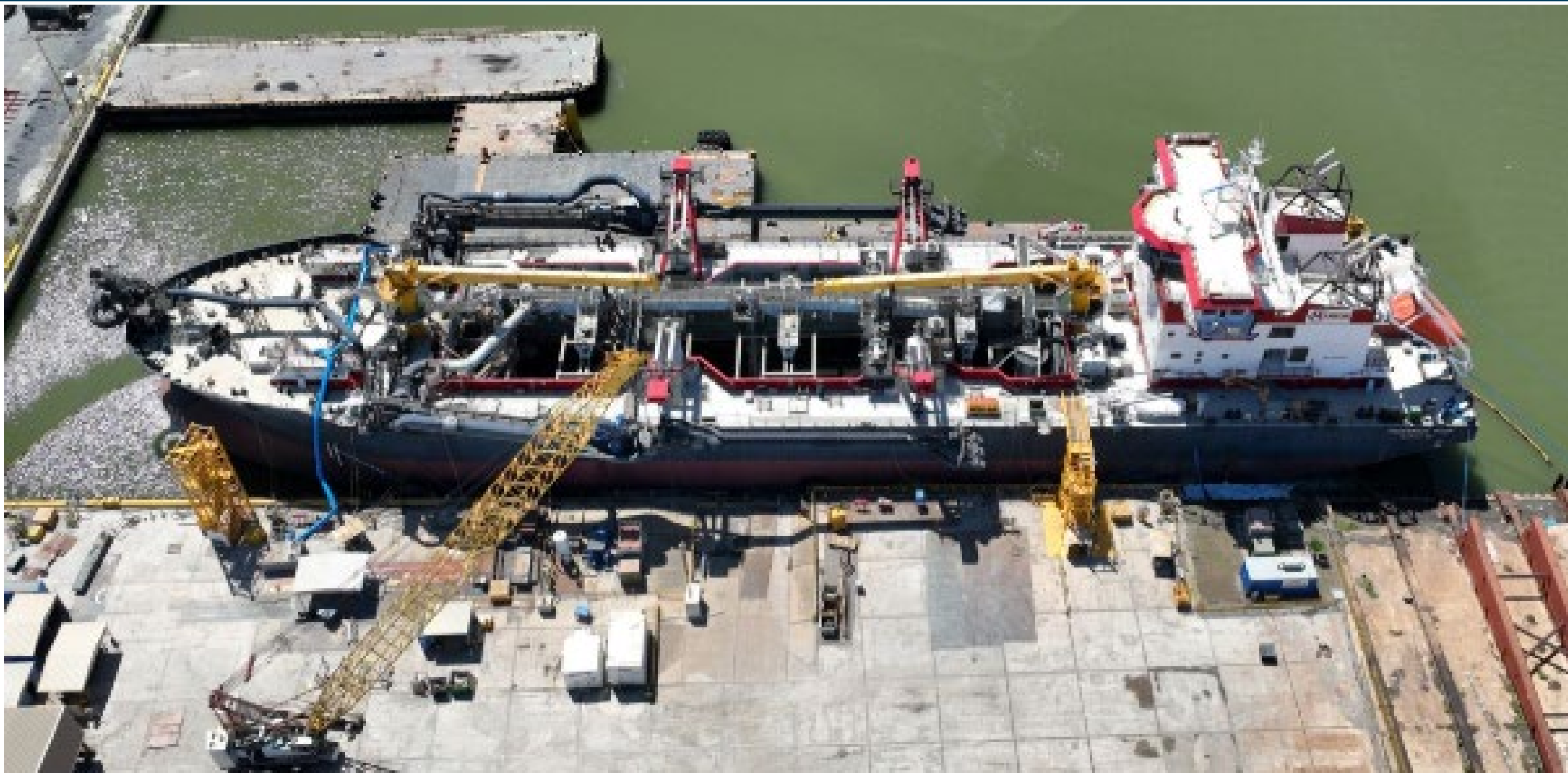
- USA Steel
- USA Built
- USA Manned



Jul 21, 2023 2:07:05 PM



Building the Nation's Waterways and Marine Infrastructure Since 1905  
An Employee-Owned Company | [www.mansonconstruction.com](http://www.mansonconstruction.com)



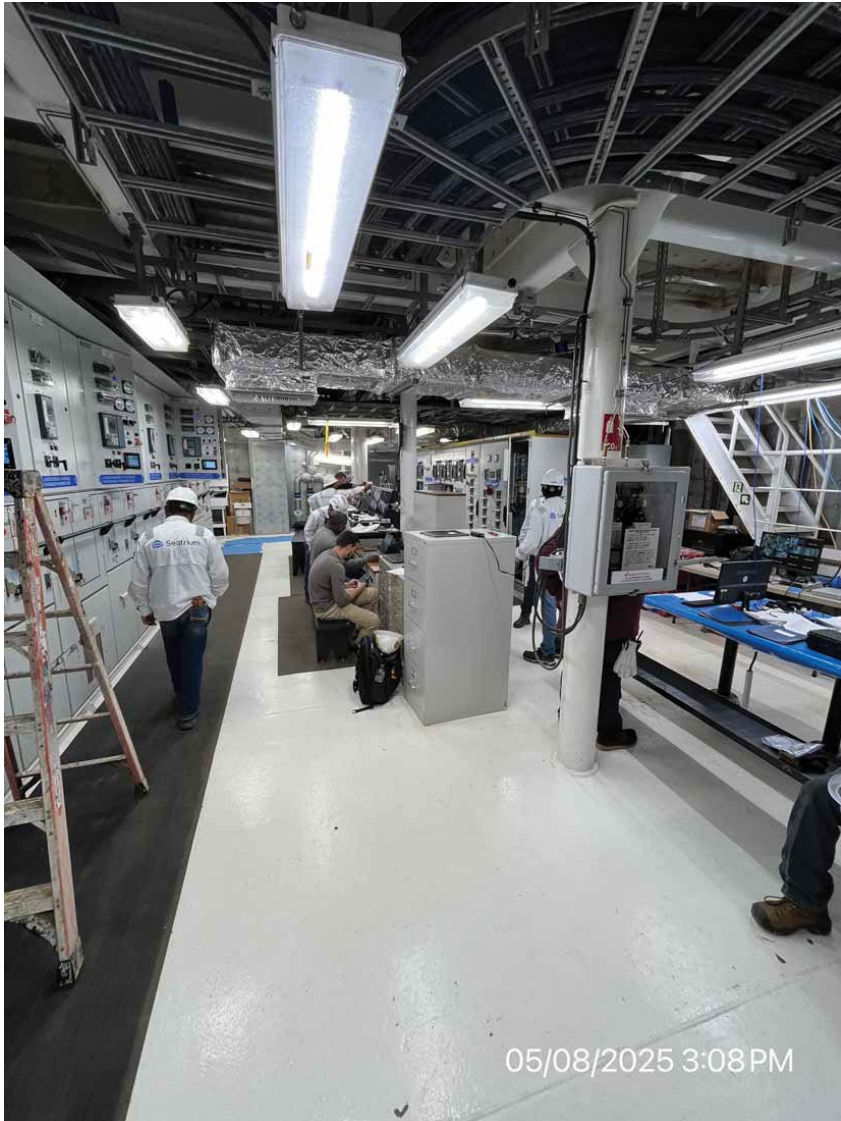
Building the Nation's Waterways and Marine Infrastructure Since 1905  
An Employee-Owned Company | [www.mansonconstruction.com](http://www.mansonconstruction.com)





Building the Nation's Waterways and Marine Infrastructure Since 1905  
An Employee-Owned Company | [www.mansonconstruction.com](http://www.mansonconstruction.com)

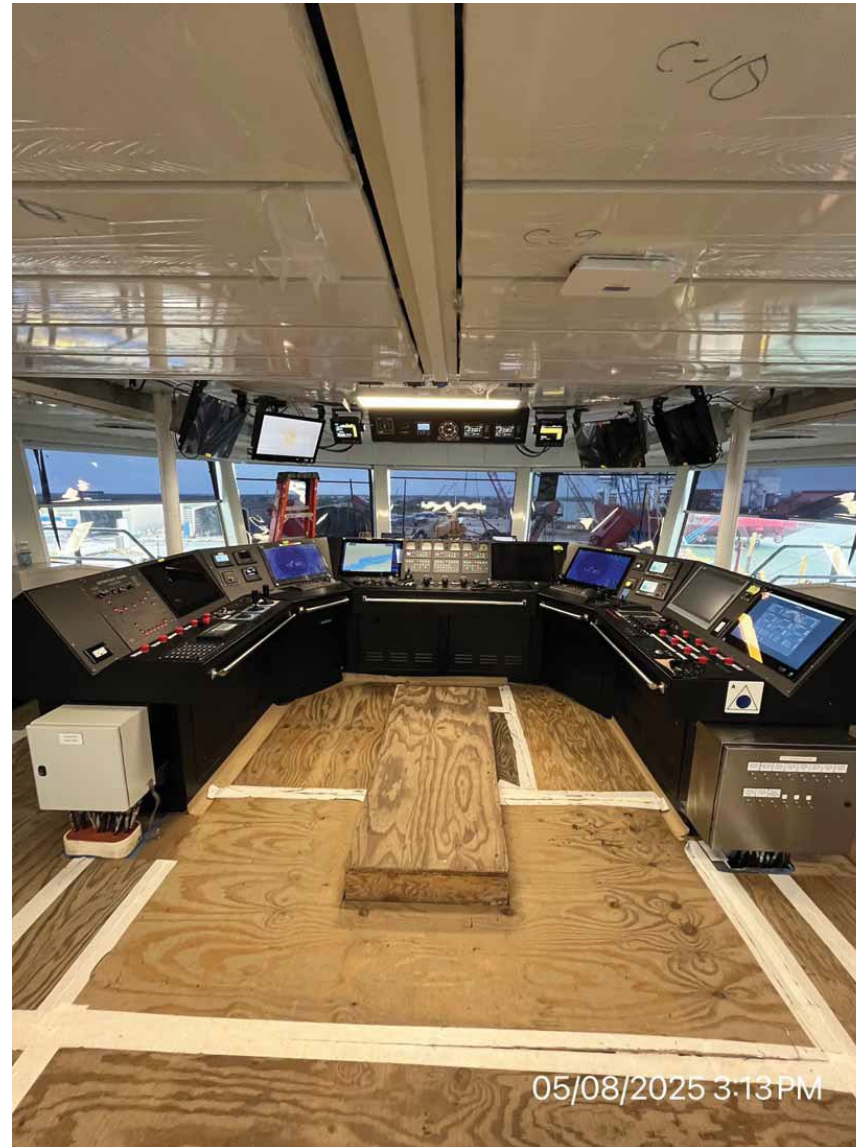




Building the Nation's Waterways and Marine Infrastructure Since 1905  
An Employee-Owned Company | [www.mansonconstruction.com](http://www.mansonconstruction.com)



- Contract Signed Sept 2020
- Delivery in Spring of 2023
- Current Delivery date is 5/31/2025
- Seatrials any day now...



# Manson's New Cutter Suction Dredge

## Vessel Specifications

- **Type:** Diesel/Electric
- **Discharge Pipe Size:** 30"
- **OAL with/without Idler:** 413'/267'
- **Total Horsepower:** 17,000 HP



Building the Nation's Waterways and Marine Infrastructure Since 1905  
An Employee-Owned Company | [www.mansonconstruction.com](http://www.mansonconstruction.com)



# Manson's New Cutter Suction Dredge



Building the Nation's Waterways and Marine Infrastructure Since 1905  
An Employee-Owned Company | [www.mansonconstruction.com](http://www.mansonconstruction.com)