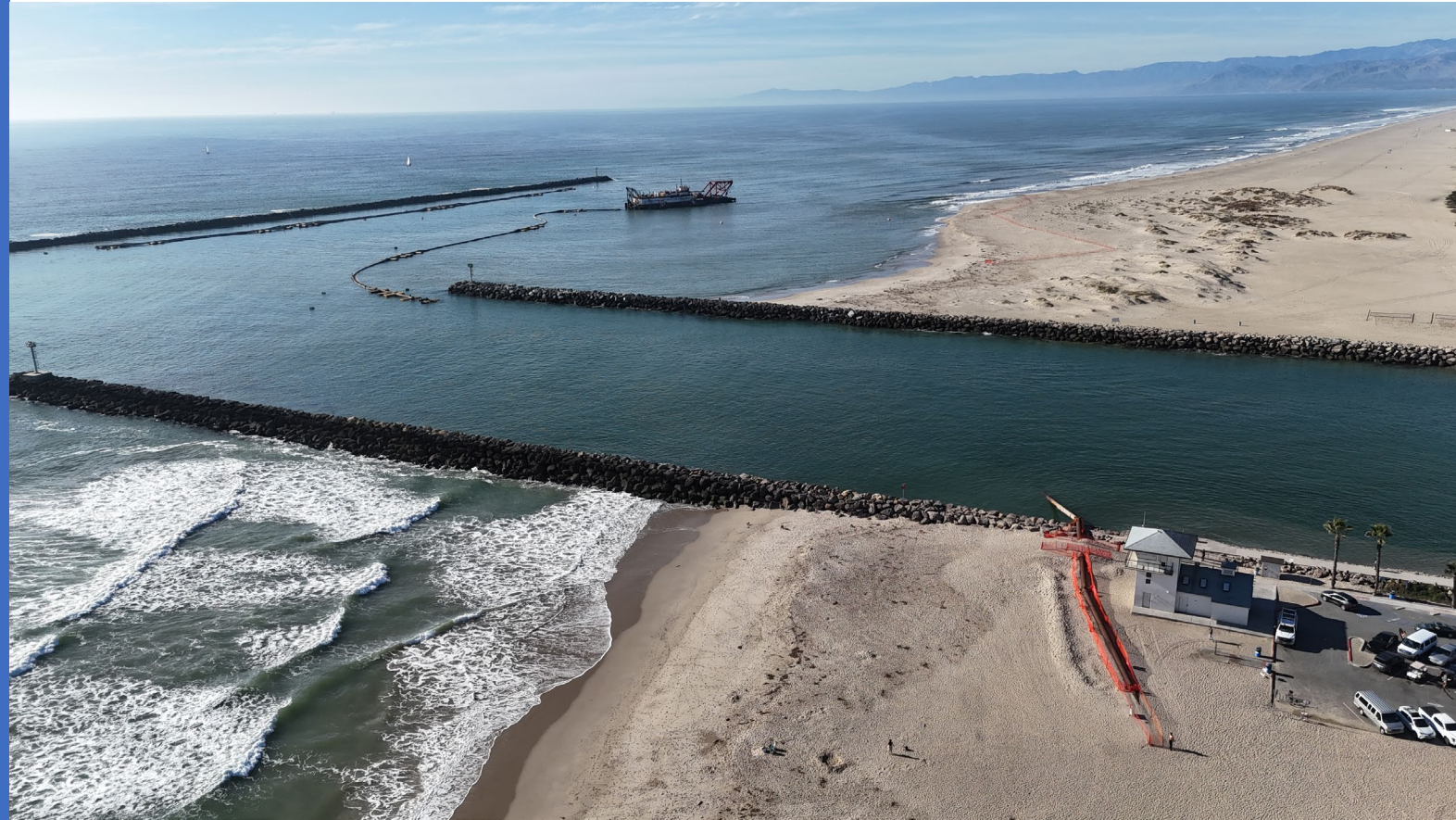


# Channel Islands Harbor Dredging Project

CMANC May 2025









**\* Coast Guard Station**

Channel Islands Beach

**\* Naval Base – Port Hueneme**

Port Hueneme

Pacific Coast Hwy

**\* Naval Base – Point Mugu**

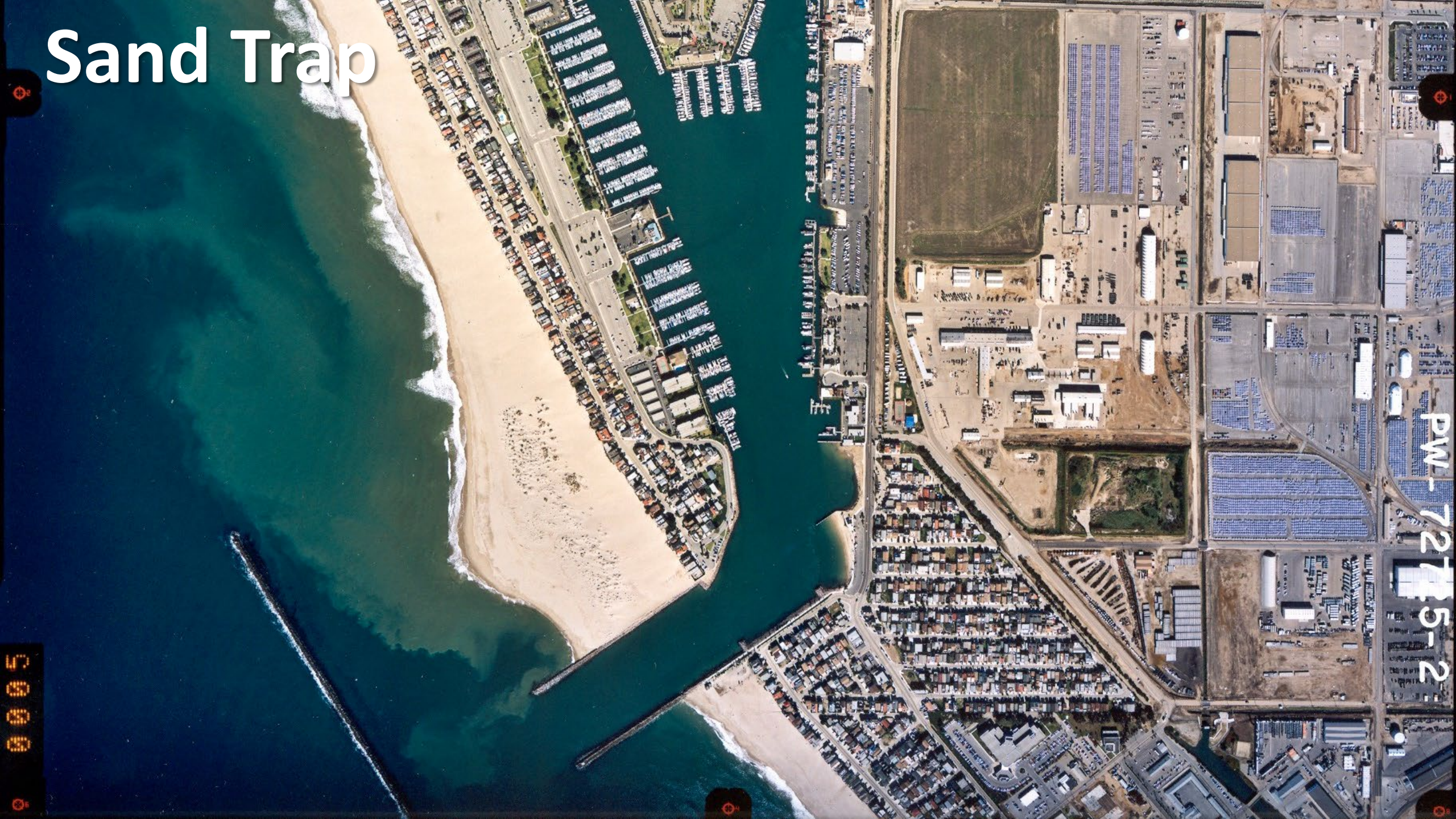
Hueneme Canyon

Hueneme Canyon





# Sand Trap



PW-7275-2

0000









Port Hueneme October 2024





Sand Trap 2024





# Burying the Pipe





# Recent Dredging Data Quantity of Sand Removed

Year	Volume
1990-91	1,430,000 cubic yards
1992-93	1,112,000 cubic yards
1994-95	875,000 cubic yards
1996-97	1,338,000 cubic yards
1997-98	1,609,000 cubic yards (interim/emergency dredging)
1998-99	1,117,000 cubic yards
2000-01	1,236,000 cubic yards
2002-03	2,062,000 cubic yards
2004-05	2,141,000 cubic yards
2006-07	1,171,000 cubic yards
2008-09	2,198,000 cubic yards
2010-11	969,000 cubic yards
2012-13	600,000 cubic yards
2014-15	2,369,000 cubic yards
2016-17	1,623,000 cubic yards
2018-19	1,600,000 cubic yards
2020-21	1,930,000 cubic yards
2022-23	2,400,000 cubic yards
2024-25	885,000 cubic yards



# Current Conditions Dredge Pond





## Environmental Issues

- Permitting issues with the Regional Water Quality Control Board
- Due to dunes on the beach, environmental monitors had to monitor the dredge pond to ensure that no environmental damage was done
- The Coastal Commission has approved a plan that requires extensive expansion of the dunes and monitoring
- Major opposition to the dune project by beachfront residents



# Dune Mitigation Plan

M&A #18-082-04





# Current Conditions Hueneme Beach





# Current Conditions Hueneme Beach





## 2025/2026 Project Update

- Will the dredge return this year to complete work off cycle?