



**PORT of  
SAN DIEGO**  
Waterfront of Opportunity

# California Marine Affairs and Navigation Conference

Vice Chair Danielle Moore, Board of Port Commissioners





# Port of San Diego Granted Lands

**34**

miles of waterfront

**3,677**

acres of Submerged  
Tidelands

**2,404**

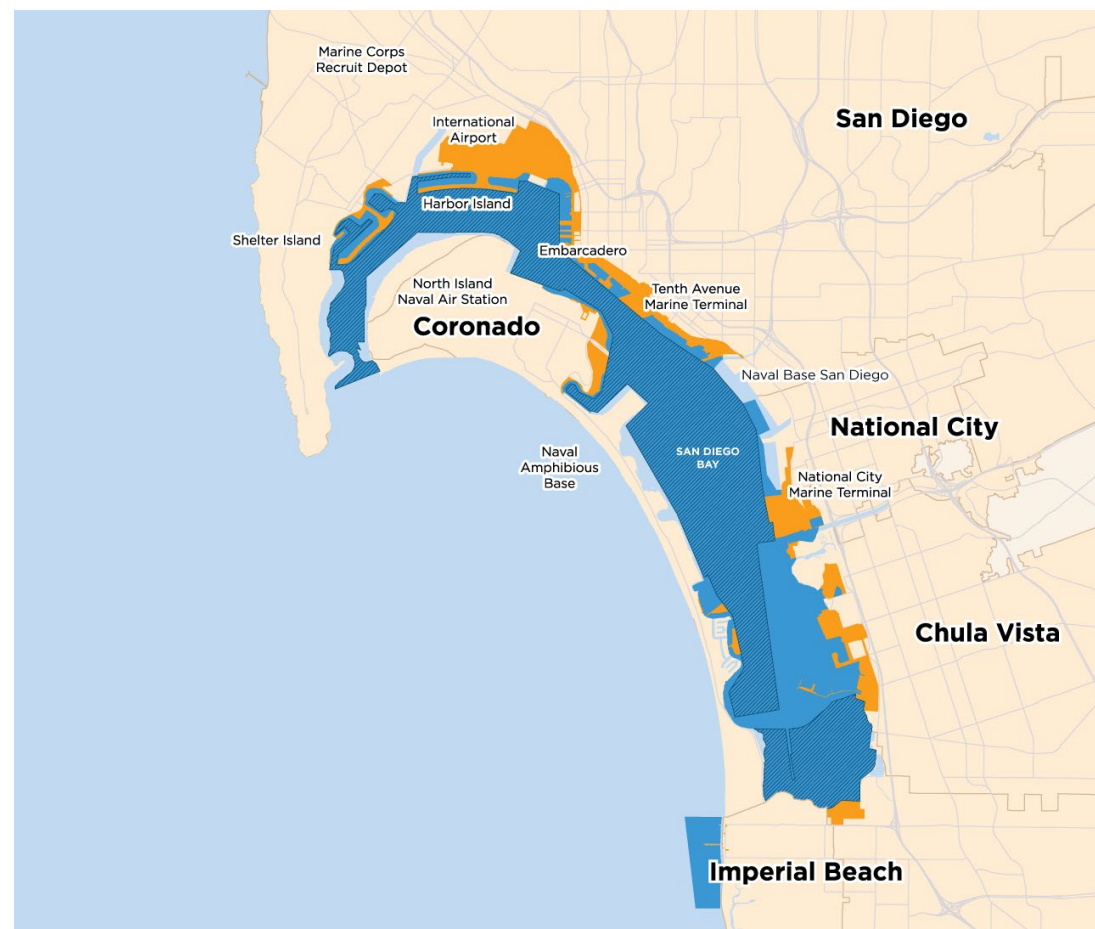
acres of Port Tidelands

Approximately

**8,300**

acres of new Submerged  
Tidelands

(subject to survey) as of January 1,  
2020





**PORT of  
SAN DIEGO**  
Environment



# MARITIME CLEAN AIR STRATEGY - 2030 GOALS

## Vision Statement: Health Equity for All



**Trucks:** 100% ZE truck trips by 2030 for all trucks that call to the Port's two marine cargo terminals. 40% ZE truck trips by 2026.



**Cargo Handling Equipment:** Transition diesel cargo handling equipment to 100% ZE by 2030.



**Harbor Craft:** Tugboat diesel emissions reduced 50% through transition to Zero / Near-Zero Emission technologies and/or other lower-emitting engines or alternative fuels.



**Port Fleet:** Transition to 100% Zero / Near-Zero Emission technologies.



**Ocean-going Vessels:** Equip marine terminals with shore power and/or an alternative technology to reduce ocean-going vessel emissions for ships that call to the Port.





# Shore Power Infrastructure

## Ocean Going Vessels

### Cruise Ship Terminal

- First system installed 2010
- Second system installed in 2022
  - Operational January 2023

### Tenth Avenue Marine Terminal

- Shore power system installed in 2014 to support Dole's operations.

### National City Marine Terminal

- Shore power system anticipated to be operational in 2025





# Crowley eWolf



San Diego County  
Air Pollution  
Control District



CALIFORNIA  
AIR RESOURCES BOARD







# SSA Marine - Zero Emissions Forklift





# Port of San Diego: Catalyst for the Blue Economy

- Expertise in permitting and entitlement
- Role as landlord, operator, regulator, and environmental steward.
- Champion of the Blue Economy
- Supporting Public-Private/Public Partnerships





# Blue Economy Incubator



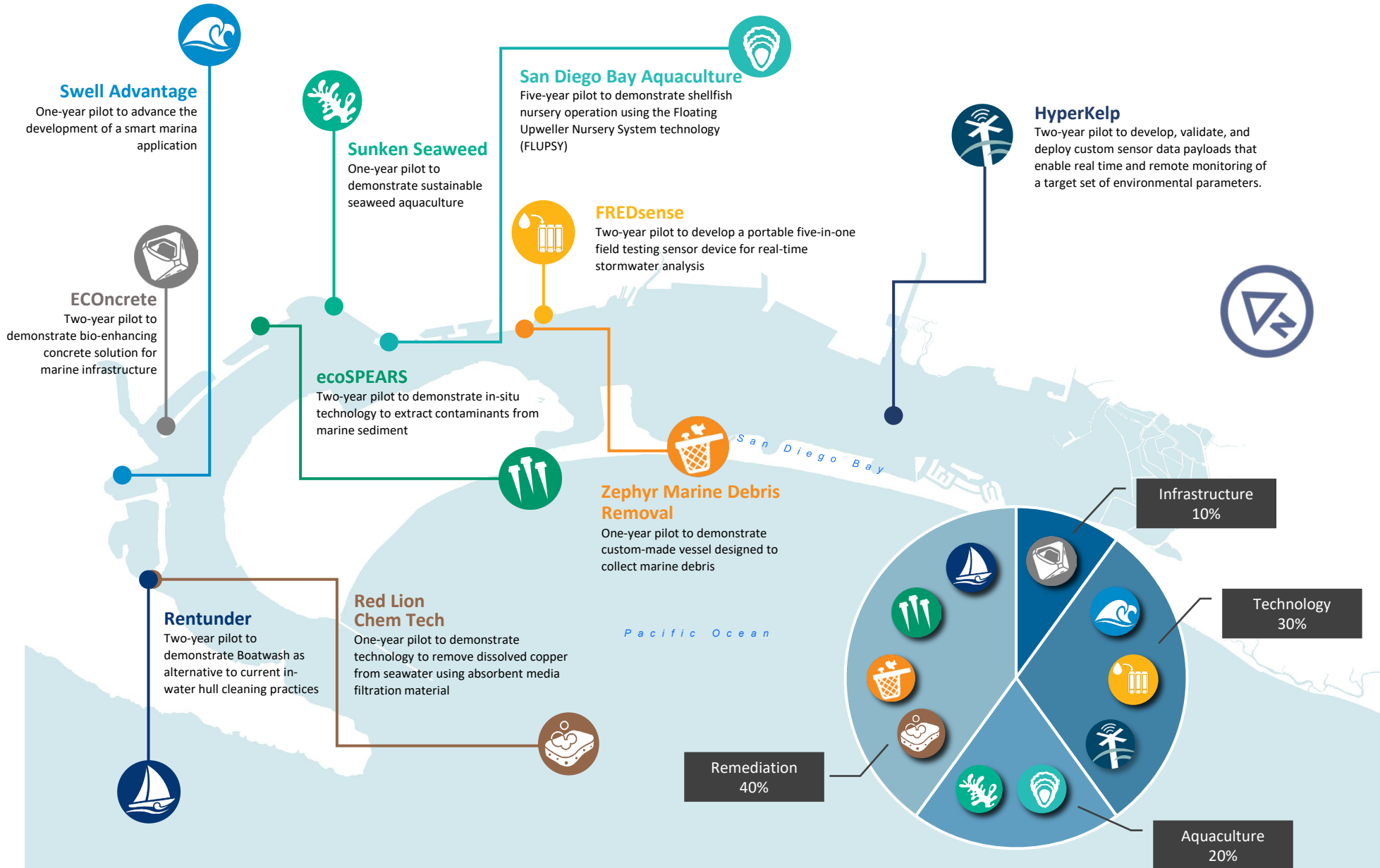
May 2023

## BEI Value Proposition – Pilot Project Facilitation

- Funding
- Port-based testbed and pilot sites
- Regulatory and permitting assistance
- Subject matter expertise
- Strategic stakeholder collaboration
- Public Relations services and media visibility
- Support to leverage grant opportunities



# Blue Economy Incubator Portfolio

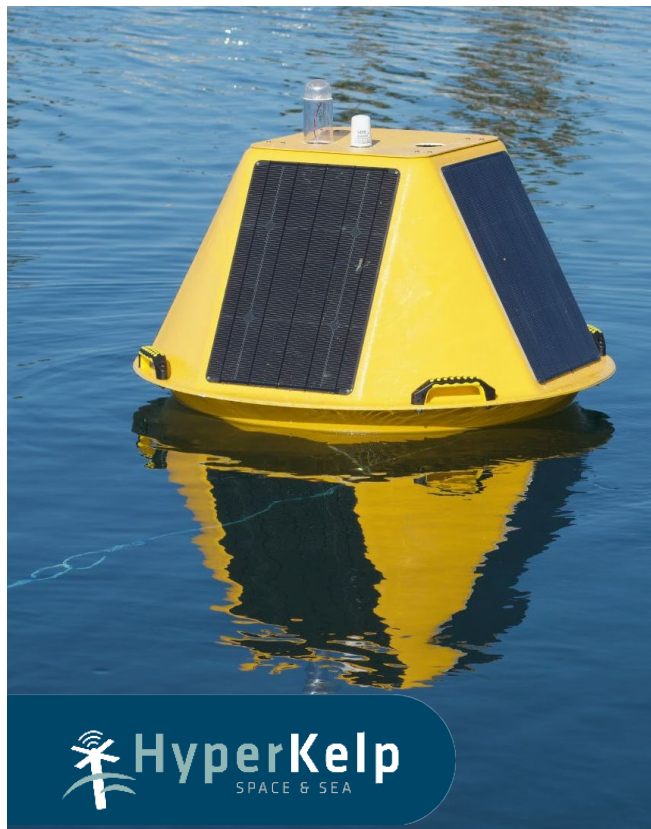




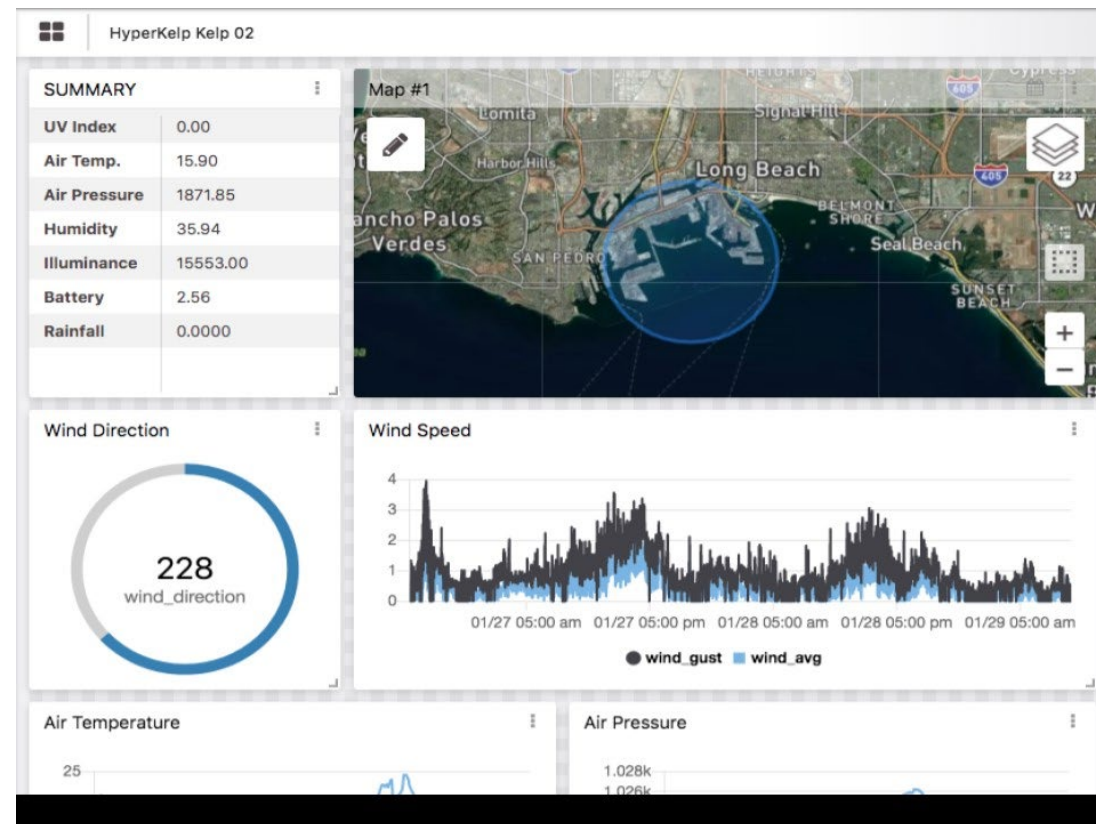


# New Pilot Project / HyperKelp

2-year pilot to develop, test, and validate a smart buoy platform tailored for various Port monitoring applications



Multi Sensor Buoy Technology



Ocean Data as a Dashboard (ODaaS)





# ECOConcrete

## ECO-Engineered Solution for Shoreline Protection

📅 2021

📍 Harbor Island



Final biodiversity monitoring event / 2 years post installation





# Gaylord Pacific Resort & Convention Center











# Gaylord Pacific Resort & Convention Center







# Sweetwater Park – Conceptual Renderings







# Freedom Park at Navy Pier







**Future entertainment district including proposed Topgolf**

**Parks connected by a waterside promenade**



**PORT of SAN DIEGO**  
Waterfront of Opportunity  
**East Harbor Island  
Redevelopment Plans**





# 1220 Pacific Highway







# Seaport Village Revitalization







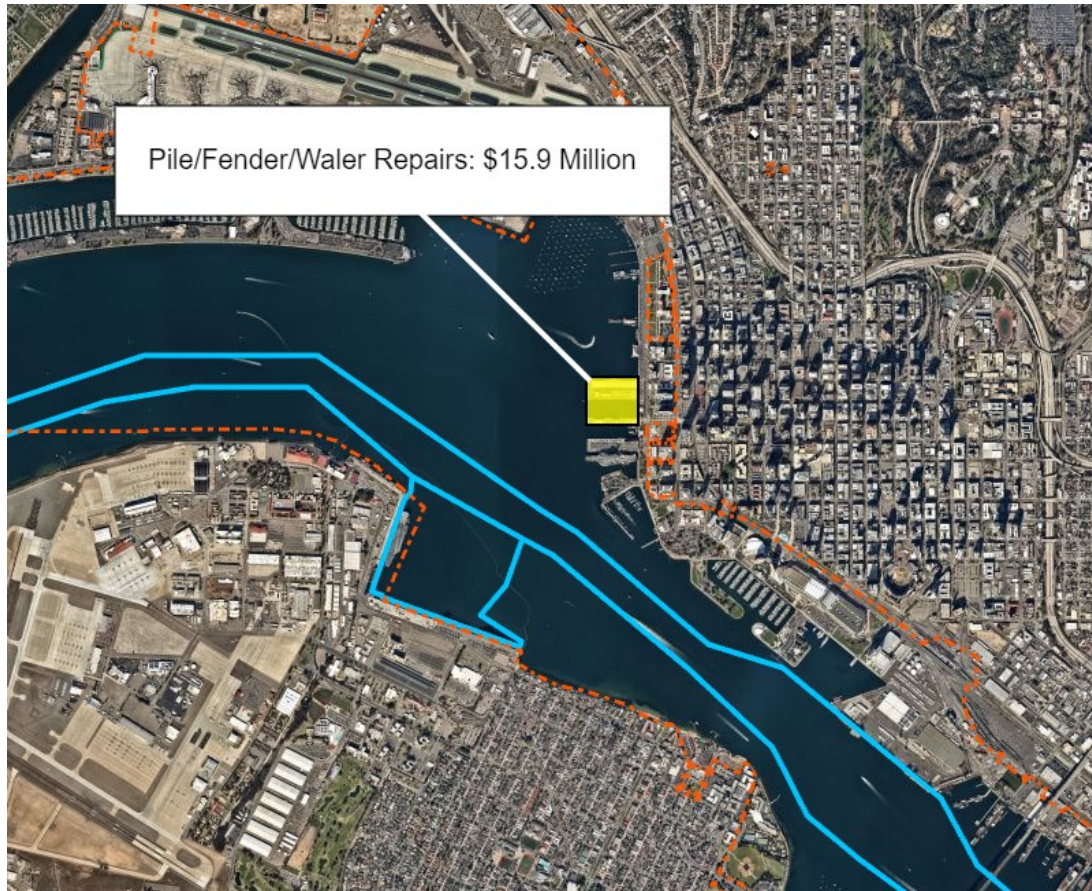
# Rady Shell at Jacobs Park







# Harbor Maintenance Trust Fund Projects



**Cruise Ship Terminal Repairs:  
\$15.9 Million**



**National City Marine Terminal  
Structural Repairs: \$41.7 Million**



*Thank you*



**PORT of  
SAN DIEGO**  
Waterfront of Opportunity